

Technical Data
Technische Daten
Caractéristiques techniques

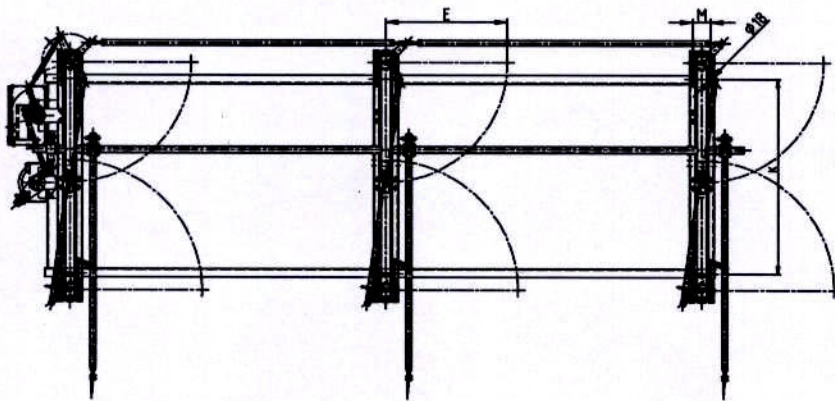
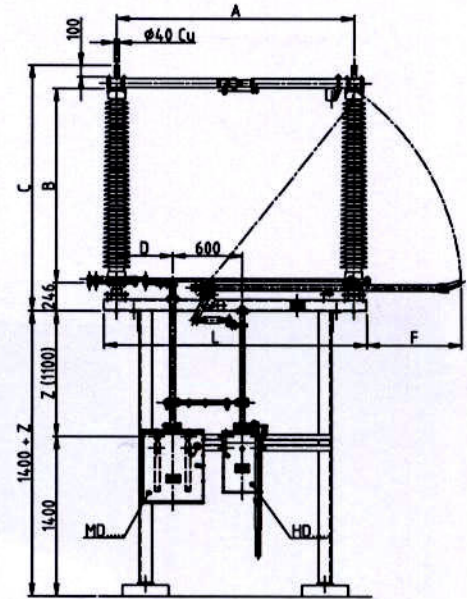
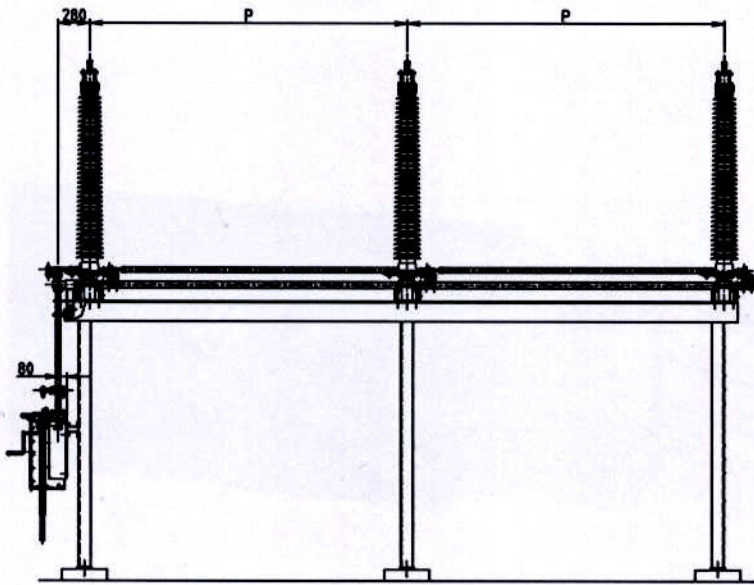
Rated voltage <i>Nennspannung</i> Tension assignée	(kV)	72.5	100	123	145	170
Rated lightning impulse withstand voltage <i>Nenn-Stehblitzstossspannung</i> Tension de tenue assignée aux chocs de foudre	1,2 / 50 μ s (kV) 1) 2)	325 375	450 520	550 630	650 750	750 860
Rated power-frequency withstand voltage <i>Nenn-Stehwechselfspannung</i> Tension de tenue assignée à la fréquence industrielle	50Hz/1min (kV) 1) 2)	140 160	185 210	230 265	275 315	325 375
Nominal current <i>Nennstrom</i> Courant assigné	(A)	2000 2500	2000 2500	2000 2500	2000 2500	2000 2500
Rated short-time withstand current <i>Nenn-Kurzzeitstrom</i> Courant de courte durée admissible assigné	(kA)	31.5/40	31.5/40	31.5/40	31.5/40	31.5/40/50
Rated peak withstand current <i>Nenn-Stossstrom</i> Valeur de crête du courant admissible assigné	(kA)	80/100	80/100	80/100	80/100	80/100/125

1) Ph - \downarrow /Ph - Ph

2) Isolating distance
Trennstrecke
Distance d'isolement

Technical Data
Technische Daten

Type		CBD 2000	CBD 2000	CBD 2500	CBD 2500
<i>I_{peak} / I_{th} / t</i>		80 / 31.5 / 3 s	100 / 40 / 3 s 125 / 50 / 1 s	80 / 31.5 / 3 s	100 / 40 / 3 s 125 / 50 / 1 s
ΔT 65° K	(A)	2000	2000	2500	2500
ΔT 50° K	(A)	1600	1600	2000	2000
ΔT 30° K	(A)	1250	1250	1600	1600



Rated voltage Nennspannung Tension assignée	Measurements Abmessungen Dimensions										
	A (mm)	B (mm)	C (mm)	D (mm)	E (mm)	F (mm)	K (mm)	L (mm)	M (mm)	P (mm)	G (mm)
72.5 kV	950	770	1221	195	518	360	895	1170	160	1200	1100
100 kV	1250	1020	1701	225	668	475	1000	1470	160	1550	1100
123 kV	1550	1220	2001	375	821	589	1330	1770	160	1950	1100
145 kV	1800	1500	2051	420	953	700	1600	2020	160	2200	1100
170 kV	2050	1700	2501	485	1076	824	1750	2270	160	2500	1100

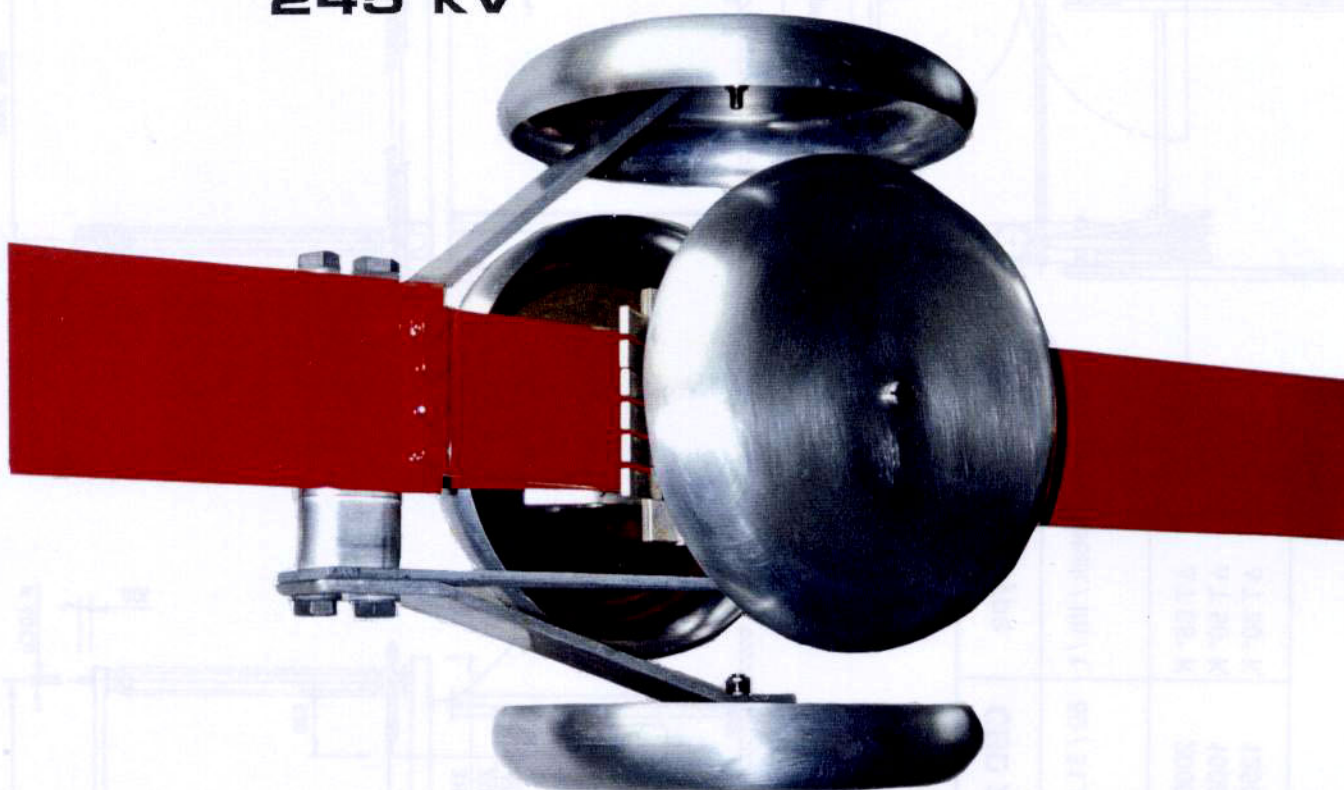


Neuenbergstrasse 26
D-91301 Forchheim
Tel.: +49 (0) 9191/ 67 04 24
Fax: +49 (0) 9191/ 67 04 25
E-mail: info@energy-alliance-ag.de
www.energy-alliance-ag.de

Centre break disconnecter
2-Säulendrehrenner
Sectionneur rotatif à 2 colonnes

CBD 2000
CBD 2500

245 kV

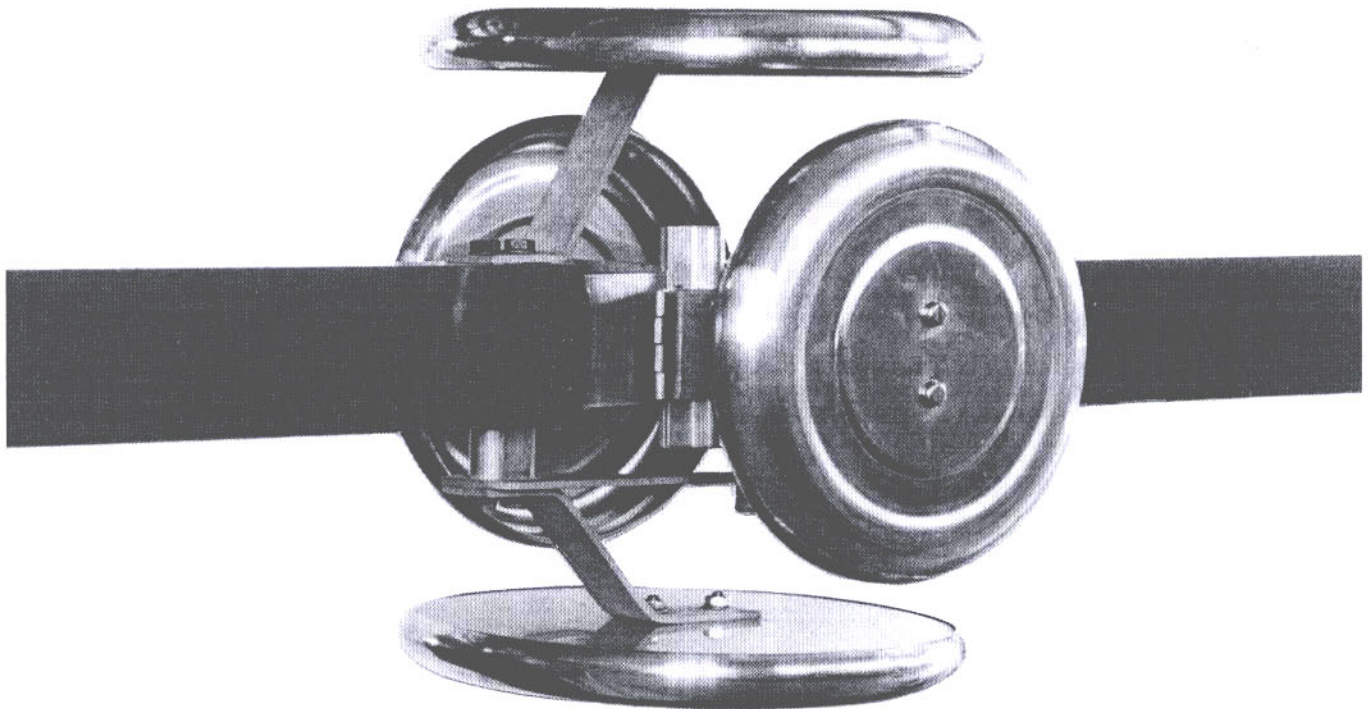


Technical data	Technische Daten	Caractéristiques techniques	
Rated voltage Nennspannung Tension assignée		kV	245
Rated lightning impulse withstand voltage Nenn-Stehblitzstossspannung Tension de tenue assignée aux chocs de foudre	1,2 / 50 μ s	kV	1) 1050 2) 1200
Rated power-frequency withstand voltage Nenn-Stehwechselfspannung Tension de tenue assignée à la fréquence industrielle	50 Hz / 1 min.	kV	1) 460 2) 530
Nominal current Nennstrom Courant assigné		A	2000 / 2500
Rated short-time withstand current Nenn-Kurzzeitstrom Courant de courte durée admissible assigné		kA	31.5 / 40 / 50
Rated peak withstand current Nenn-Stosstrom Valeur de crête du courant admissible assigné		kA	80 / 100 / 125

1) PH - \perp / PH - PH

2) Isolating distance, Trennstrecke, distance d'isolement

420 kV



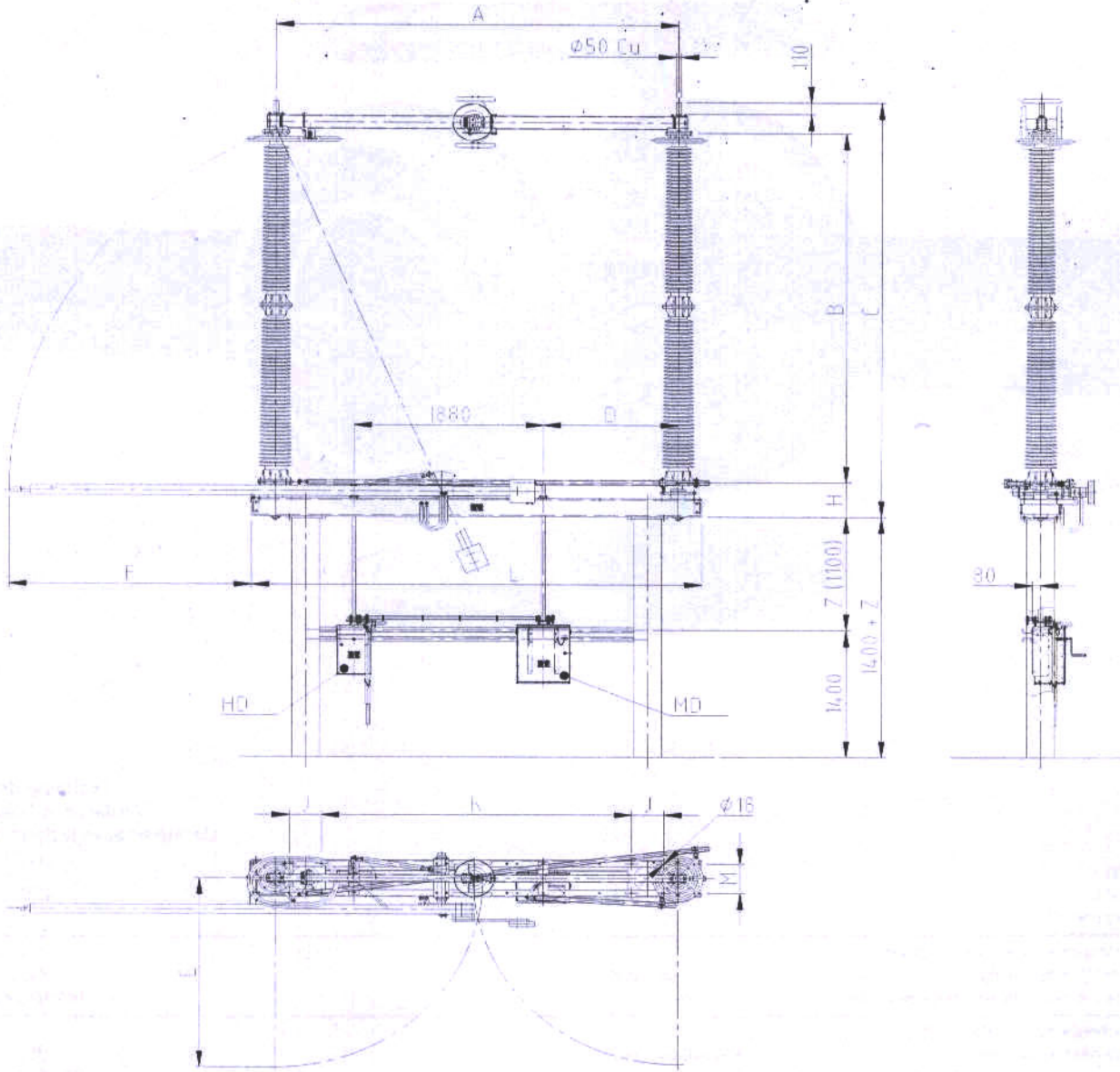
Technical data
Technische Daten
Caractéristiques techniques

Rated voltage <i>Nennspannung</i> Tension assignée	(kV)	420
Rated lightning impulse withstand voltage <i>Nenn-Stehblitzstossspannung</i> Tension de tenue assignée aux chocs de foudre	1,2 / 50 μ s (kV) 1) 2)	1425 1425(+240)
Rated power-frequency withstand voltage <i>Nenn-Stehschaltstossspannung</i> Tension de tenue assignée aux chocs de manœuvre	50/2500 μ s (kV) 1) 2)	1050 900(+345)
Rated switching impulse withstand voltage <i>Nenn-Stehwechselspannung</i> Tension de tenue assignée à la fréquence industrielle	50Hz/1min. (kV) 1) 2)	520 610
Nominal current <i>Nennstrom</i> Courant assigné	(A)	2500 3150 4000
Rated short-time withstand current <i>Nenn-Stosstrom</i> Courant de courte durée admissible assigné	(kA)	40 50 63
Rated peak withstand current <i>Nenn-Stosstrom</i> Valeur de crête du courant admissible assigné	(kA)	100 125 160

1) Ph - \perp /Ph - Ph

2) Isolating distance
Trennstrecke
Distance d'isolement

Type		CBD 2500	CBD 3150	CBD 4000
I _{peak} / I _{th} / I		100 / 40 / 3s	100 / 40 / 3s	100 / 40 / 3s
		125 / 50 / 3s	125 / 50 / 3s	125 / 50 / 3s
			160 / 63 / 1s	160 / 63 / 1s
T 65° K	(A)	2500	3150	4000
T 50° K	(A)	2000	2500	3150
T 30° K	(A)	1600	2000	2500



Measurements
Abmessungen
Dimensions

Rated voltage Nennspannung Tension assignée	A (mm)	B (mm)	C (mm)	D (mm)	E (mm)	F (mm)	J (mm)	K (mm)	L (mm)	M (mm)	H (mm)	Z (mm)
420 kV	4000	3350	4545	1250	2062	1965	320	3680	4470	320	378	1100